



# URBAN WATERFRONT NEIGHBORHOODS

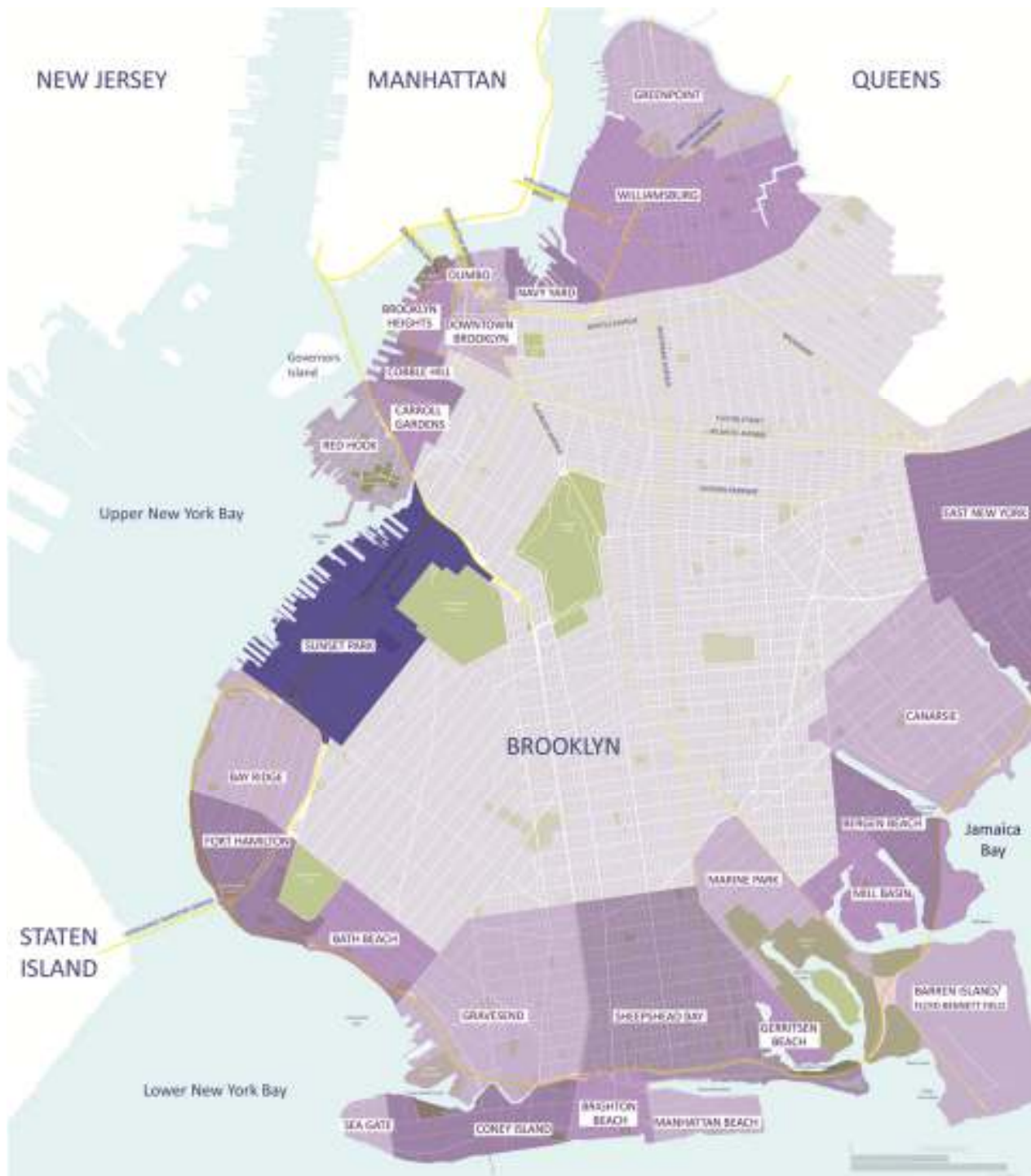
Learnings from Brooklyn

**Sapna Advani**

**Brooklyn Waterfront Research Center**

*A planning and urban design perspective*

*October 26<sup>th</sup> 2011*



## KEY PLANNING ISSUES

- How does one get to the water?
- What can be done at the waterfront?
- An ecologically sensitive approach

## SUNSET PARK: A waterfront neighborhood case study

**BROOKLYN- A Waterfront City**



Source: Brooklyn Greenway Initiative



Source: Robin Michals

- Easy access to the waterfront
- Multiple means of transportation
- Continuous access linking various destinations

**Access to and along the waterfront**



**Waterfront LIVING**



**Waterfront WORKING**



**Waterfront PLAYING**

**To preserve an authentic urban edge, diverse uses need to be accommodated and co-exist**

**A Waterfront for Living, Working, and Playing**



**The Brooklyn waterfront- An equitable, diverse,  
and vibrant option for living**

**Waterfront Living**



**Brooklyn has unique resources that can play a central role in shaping the maritime and industrial future of our City**

**Waterfront Working**



**Brooklyn is fast becoming a noteworthy waterfront destination**

**Waterfront Playing**



## ENVIRONMENTAL POLLUTION CLIMATE CHANGE AND SEA LEVEL RISE

- +Pool
- Oyster Reefs
- EConcrete, developed by SeArc



Ecological Sensitivity





Source: Robin Michals

## Sunset Park: A case study of an evolving waterfront neighborhood



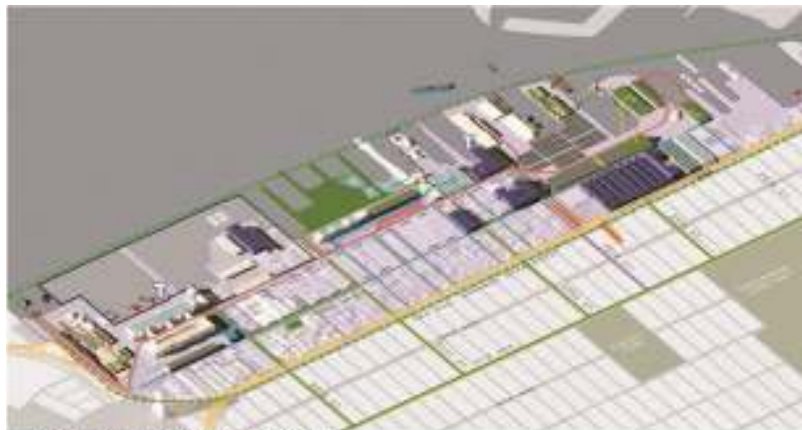
## SUNSET PARK

- Maritime and industrial center
- Transportation access
- Local skilled labor
- Diverse ethnically, racially and economically.
- High walk-to-work ratio of 14%

An Evolving Waterfront Neighborhood

# VISION FOR THE FUTURE

- A collective identity for the neighborhood that caters to both the residential and the industrial
- Capitalize on the urban synergies that exist between varying uses



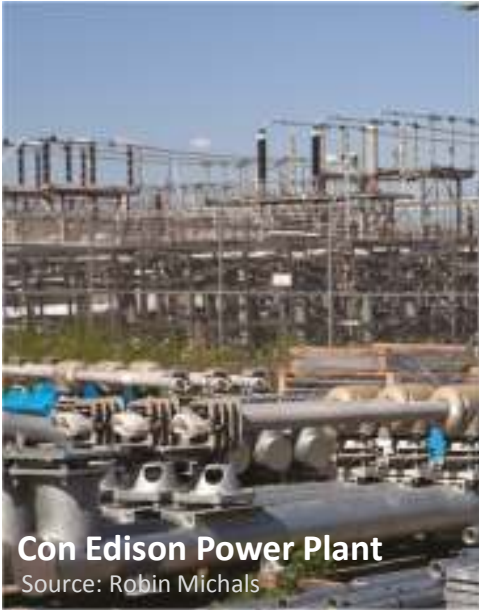
**COMPOSITE RECOMMENDATIONS**  
SUNSET PARK WATERFRONT VISION PLAN  
Sunset Park Waterfront Vision Plan, NYCEDC



Sunset Park BOA Study, UPROSE



197- A Plan, Community Board 7



**Con Edison Power Plant**

Source: Robin Michals



**Brooklyn Army Terminal**

## FUTURE OF INDUSTRY

- Locational Advantages
- Green Industry
- Industrial Symbiosis
- Green transportation
- Mega Port Future



**South Brooklyn Marine Terminal**

Source: Robin Michals



**SIMS Recycling**

Source: NYCEDC and Selldorf Architects

**An Industrial Perspective**



Source: Rob Reynolds

## RESIDENTIAL NEEDS

- Waterfront- A shared resource
- Proximity to well-paying jobs
- Environmental mitigation
- Preservation of the low scale character
- Affordable housing

**A Residential Perspective**



## A SUPPORTIVE FRAMEWORK- Public Realm

- Lack of public open space- primary neighborhood concern
- Sunset Park- the only significant open space in the neighborhood today
- Proposed improvements: Bush Terminal Piers Waterfront Park and the Brooklyn Greenway Initiative

**Public Realm**



**Bush Terminal Piers Waterfront Park,**  
**Source: Robin Michals**

**Sunset Park**  
Source: Robin Michals



Source: Robin Michals



**Proposed Bush Terminals Piers Park**

Source: NYC EDC & Donna Walcavage  
Landscape Architecture + Urban Design



**Green-Wood Cemetery**  
Source: Robin Michals

**Public Realm**



## A SUPPORTIVE FRAMEWORK- Transportation

- Rail Infrastructure Improvements
- Cross Harbor Freight Movement
- The Gowanus Expressway (I-278)

**Transportation**





**65<sup>th</sup> Street Rail Yard**



**Gowanus Expressway**



**1<sup>st</sup> Avenue Rail Line**

**Transportation**



- 1. Build upon what exists to create a truly authentic urban waterfront neighborhood**
- 2. Find a link to connect Industry and Housing**
- 3. Create a robust Public Realm and Transportation Network**
- 4. Think local, regional and global**
- 5. Establish a visionary plan with immediate action plans**

