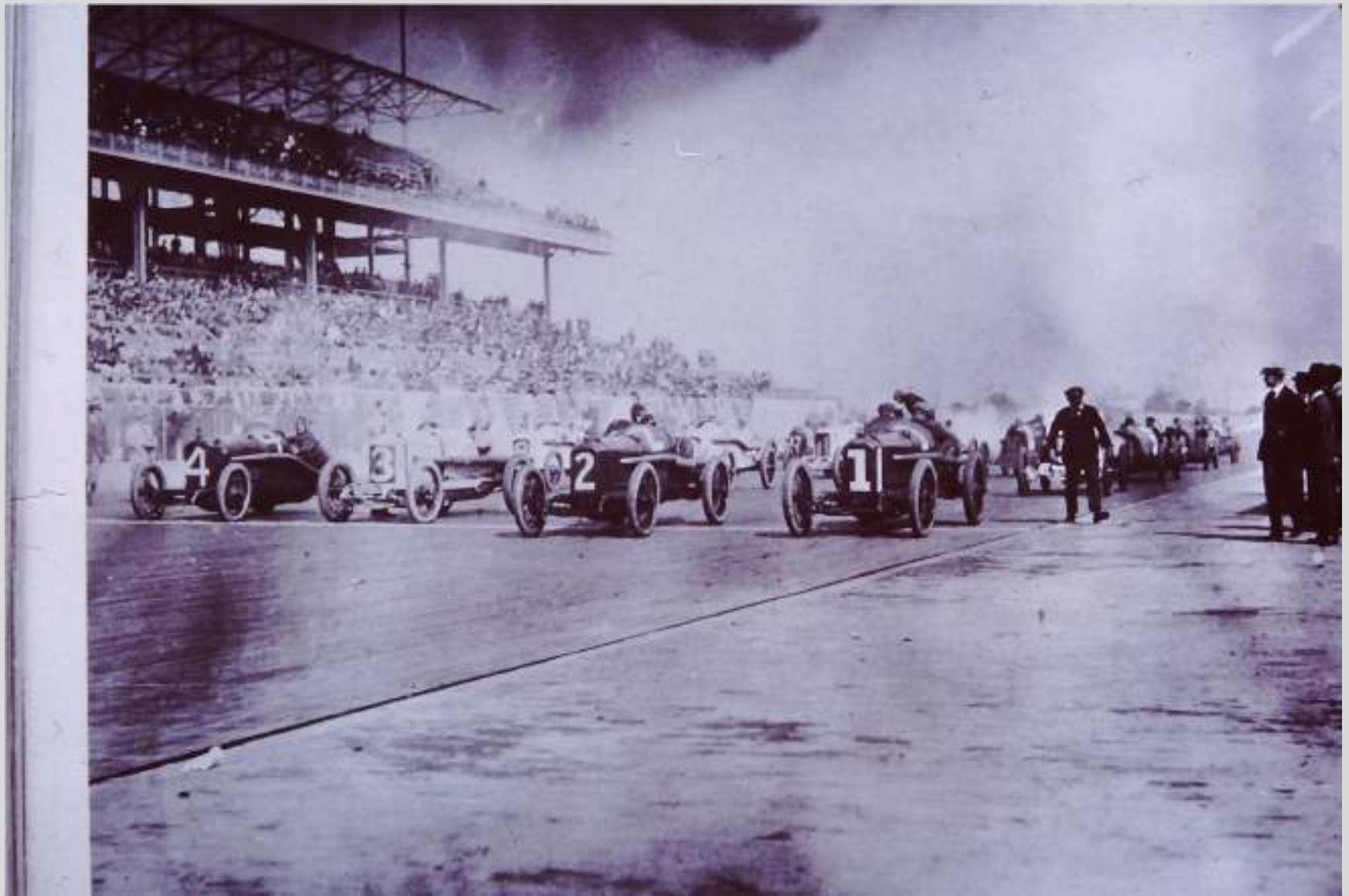


**Ron Schweiger, Brooklyn Historian**  
**A picture history of Coney Island**





*Suburban Day At Sheepshead Bay, Brooklyn, N. Y.*





LODDY BROS. RESTAURANT, SHEEPSHEAD BAY, N. Y.





8077 GENERAL VIEW OF DREAMLAND, CONEY ISLAND, N. Y.  
ILLUSTRATED FIRST CARD CO., N. Y.

Luna Park, Surf Avenue,  
Coney Island, N. Y.







*Steeplechase Park, Coney Island*





A Holiday Crowd on Surf Avenue,  
Coney Island, N. Y.



FELTMANS, CONEY ISLAND, N.Y.







ORIGINAL

NATHAN'S

FAMOUS FRANKFURTERS

STOP HERE

THIS IS THE ONLY ORIGINAL Nathan's FAMOUS

ALL OUR FOOD FRESH DAILY

STOP HERE! THIS IS THE ONLY ORIGINAL Nathan's FAMOUS IN CONEY ISLAND

ICE COLD CREAMY ROOT BEER 5c

BEER ALE 5c ON DRAUGHT

ORANGE PINEAPPLE GRAPE 5c

HOT FRANKFURTERS HAMBURGER ROAST BEEF 5c

HOT FRANKFURTERS HAMBURGER ROAST BEEF 5c

FRESH FRUIT PINEAPPLE ORANGE AND GRAPE 5c

THIS WAY TO Nathan's BEER GARDEN NO EXTRA CHARGE AT TABLE

5c

5c

5c

5c

5c

5c

5c

5c

5c

5c

5c

5c







The Cyclone, Coney Island, N. Y.







Keyspan Park

